



# GAT MONTHLY MEMBERSHIP PROGRESS REPORT

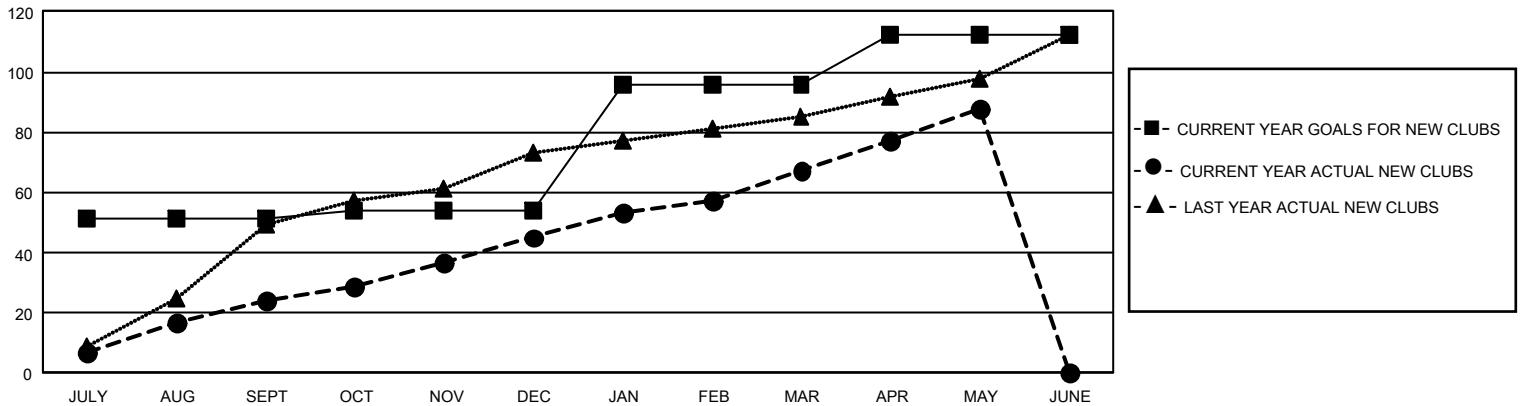
Results as of: 5/31/2025

## GMT Constitutional Area 6 - I, Group E

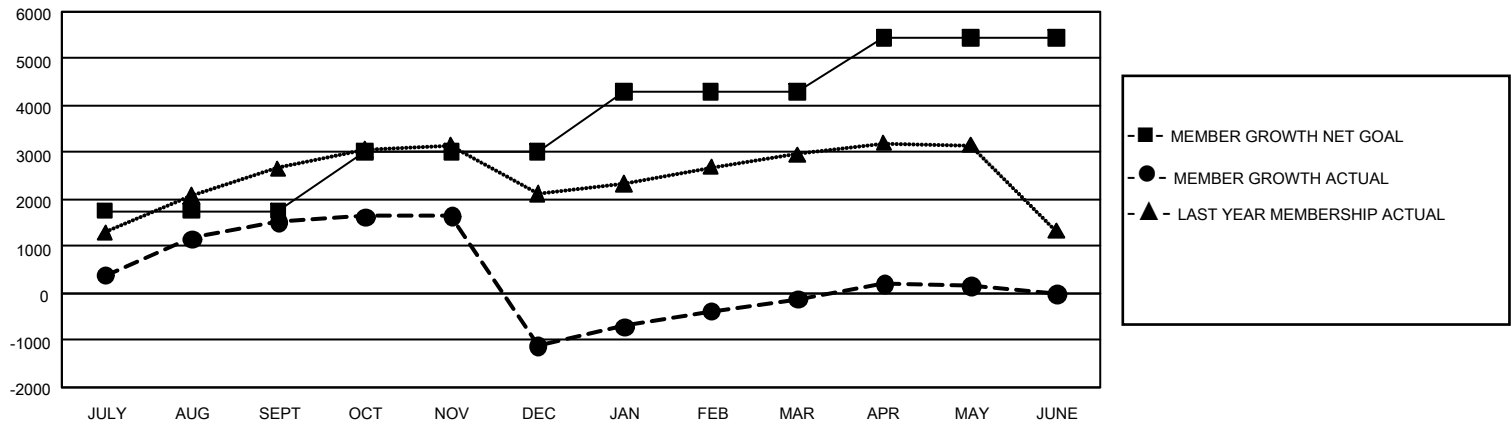
REPORT DOES NOT INCLUDE CLUBS IN UNDISTRICTED AREAS.

Clubs				Members			
RESULTS FOR 2024-2025				RESULTS FOR 2024-2025			
QUARTER	NEW CLUB GOAL	NEW CLUBS	DROPPED CLUBS	QUARTER	MEMBER GROWTH NET GOAL	MEMBER GROWTH ACTUAL	DROPPED MEMBERS ACTUAL (including transfers)
JULY/AUG/SEPT	153	24	8	JULY/AUG/SEPT	1753	3,174	1,354
OCT/NOV/DEC	9	21	112	OCT/NOV/DEC	1270	1,376	3,886
JAN/FEB/MAR	126	22	7	JAN/FEB/MAR	1270	1,947	549
APR/MAY/JUNE	48	21	3	APR/MAY/JUNE	1150	1,234	743

GOALS AND ACTUAL NEW CLUBS CUMULATIVE



GOALS AND ACTUAL MEMBERS CUMULATIVE



DROPPED CLUBS: 130

988 CLUBS OF 1,585 ADDED 1 OR MORE NEW MEMBERS

### GENDER DISTRIBUTION

MALE	38,458 (79.13%)
FEMALE	10,141 (20.87%)
NON BINARY	0 (0.00%)
PREFER NOT TO ANSWER	3 (0.01%)

### DROPPED MEMBERS

DECEASED	155
CLUB CANCELLED	1,936
OTHER	4,422
<b>TOTAL</b>	<b>6,513</b>

[CLICK HERE FOR CUMULATIVE MEMBERSHIP DATA](#)

TOTAL FAMILY UNIT MEMBERS 14,958

FAMILY MEMBERS PAYING HALF DUES 7,994